

# SHURE®

UR3 Plug-on Transmitter

Émetteur plug-on UR3

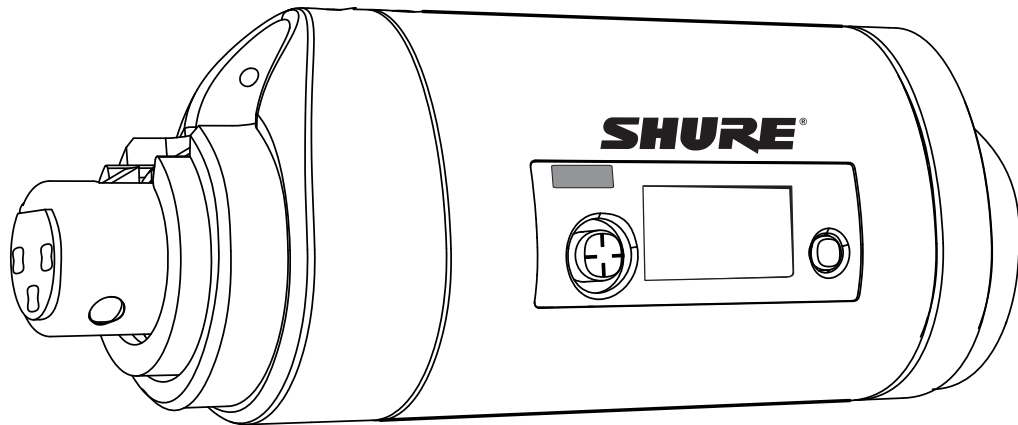
Handsender UR3

Transmisor de mano UR3

Trasmettitore plug-on UR3

Transmissor Portátil UR3

Носимый передатчик UR3



©2012 Shure Incorporated  
27A16156 (Rev. 1)  
Printed in U.S.A.





## General Description

The UR3 is compatible with any wired XLR microphone and is an essential component for professional field and media production applications. It is comfortable to hold, features a back-lit display, and the audio level and power indicator LEDs are discreetly hidden.

## Features

- UHF-R Audio Reference Companding
- Wide-band tuning (region specific)
- Smart, ergonomic industrial design
- Selectable +12V/+48V phantom power
- Sweepable high-pass filter
- Programmable preset list with copy/paste to other UR3s
- Selectable mic/line input
- 10/50 mW RF power (region specific)
- Discretely located audio and battery life indicators
- IR sync

## UR3 Plug-on Transmitter

### ① Joystick

Enter, exit and scroll using the joystick

### ② XLR Connection

Connects to any XLR wired microphone or device output

### ③ Power LED

Tri-colored LED, green, amber and red

### ④ Audio LED

Tri color LED for audio settings, red is peak

### ⑤ IR Window

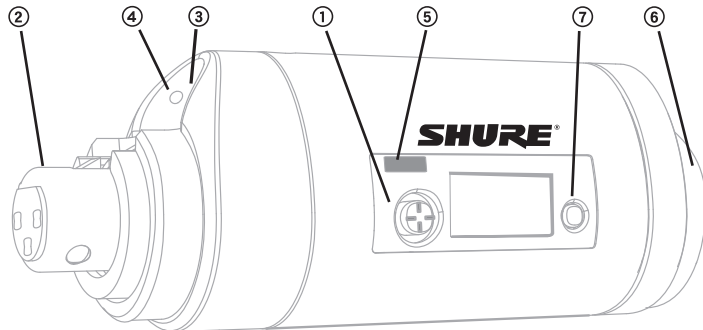
For transmitting settings from receiver to transmitter

### ⑥ Battery Compartment and Battery Cap Retainer

Requires 2 AA batteries. Turn cover counter-clockwise to open

### ⑦ Power Switch

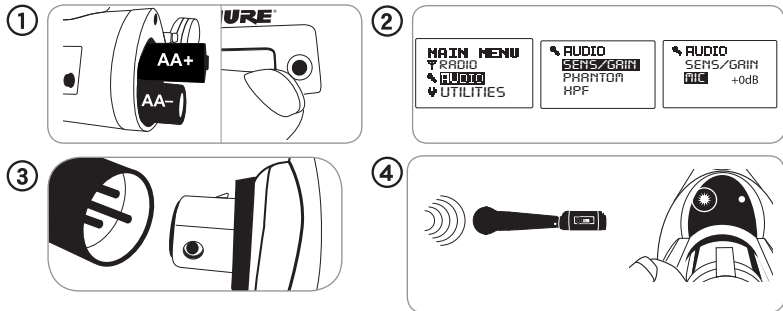
Press on, press and hold to turn off



## Setup

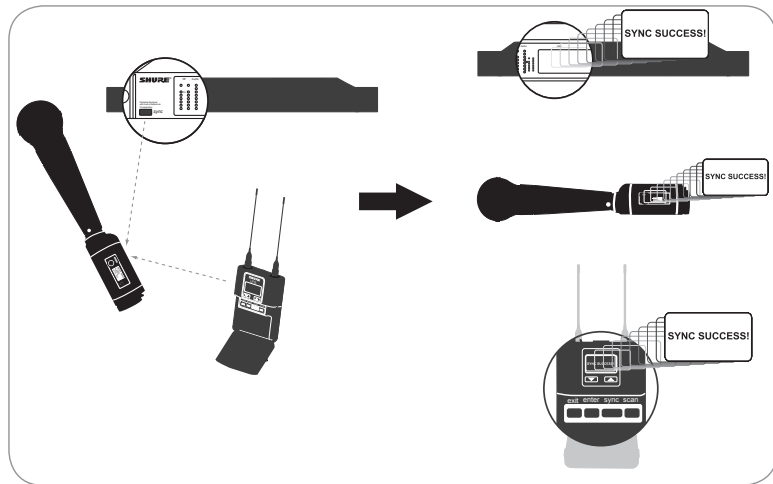
1. Install batteries and turn power on.
2. Select the appropriate level, mic or line, to match the audio signal source: **AUDIO > SENS/GAIN > SENS**
3. Plug into an XLR microphone or the output of an audio device.
4. **Perform a sound check:** Adjust the gain until the audio LED peaks red and flickers amber:

**AUDIO > SENS/GAIN > GAIN**



## Syncing with a UHF-R Receiver

Align IR windows with a UHF-R receiver and press sync on the receiver. The transmitter displays **SYNC SUCCESS!**



## Joystick

---

Use the joystick for navigating and setting values.

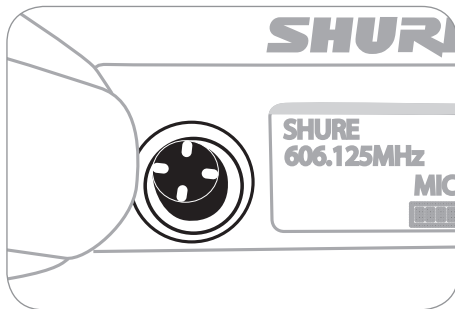
**ENTER:** Access a menu or save the selected value



**EXIT:** Exit or go back



**UP/DOWN:** Scroll through menus or change a value



## RF Settings

---

Use the **RADIO** menu to adjust the following RF settings:

### RADIO Menu

**SETFREQ:** Adjusts group, channel or frequency.

**RFPWRLVL:** Selects 10 mW or 50 mW power level (region specific)

**DISABLERF:** Disables RF transmission. **RF OFF** appears on home screen.

**ENABLERF** (if disabled): Enables RF transmission

## Audio Settings

---

### AUDIO Menu

**SENS/GAIN > SENS:** Adjusts input level to match audio signal source.

**MIC:** For microphones or mic-level outputs

**LINE:** For line-level outputs.

**SENS/GAIN > GAIN:** Adjusts audio input to the transmitter.

**PHANTOM:** Adds phantom power for condenser microphones. Select **12V** or **48V** as required for the microphone.

**HPF (LOW-CUT):** High-pass filter. Scroll up to turn on the filter and set the low-frequency rolloff in Hz. (Scroll all the way down to turn off.)

### Utility Menu

---

#### UTILITIES Menu

**LOCK:** Locks the transmitter to prevent changes to settings.

**MICPRESET:** Accesses the preset list.

**DISPLAY:** Changes the home screen display format.

**BATTERY:** Sets battery type for more accurate battery life metering.

**CONTRAST:** Adjusts display contrast (press up/down).

**RESTORE:** Restores the factory default settings.

## Locking and Unlocking the Transmitter

---

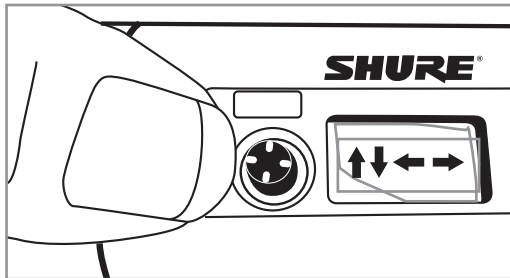
To lock the transmitter, select **UTILITIES > LOCK**.

To unlock the transmitter:

1. From the home screen, hold **ENTER** to the right for 5 seconds or until **UNLOCK?** appears.
2. Push **ENTER** again.

An on-screen key appears showing the joystick sequence to unlock the transmitter.

3. Follow the pattern to unlock the transmitter (up, down, left, right).



## Power On Shortcuts

---

### RF Off

Use this to turn on the transmitter without transmitting RF. This allows you to change frequency settings on the transmitter without accidentally interfering with a frequency being used by another transmitter.

1. **Hold the joystick to the left (EXIT)**, power on the transmitter.

The home screen displays **RF OFF**.

2. Change and save your frequency settings as you normally would – the transmitter will not broadcast.
3. To transmit RF, power the transmitter off or turn the RF on thru the main menu, **MAIN MENU > RADIO > ENABLE RF**.

### Lock

Use this shortcut to power on the transmitter with the interface locked. This prevents accidental changes to transmitter settings.

1. **While holding the joystick to the right (ENTER)**, power on the transmitter.

The home screen displays the lock icon.

2. To unlock the transmitter, hold the joystick to the right (**ENTER**) for 5 seconds and follow the on-screen instructions.

## Microphone Presets Menu

---

The transmitter holds up to 10 microphone presets. Use this menu to access a list, add, delete presets, or to copy and paste a preset list. Use the list submenu to set, modify or delete selected presets.

**Note:** The UR3 is shipped with an empty preset list.

Access the preset menu: **UTILITIES > MICPRESET**

**LIST:** Enters the **LIST** submenu.

**DELETEALL:** Deletes all presets.

**ADD:** Add a new preset.

**COPY/PASTE:** Copy and paste the entire preset list to another UR3.

### Accessing Microphone Presets

Access the preset list: **UTILITIES > MICPRESET > LIST**

1. Scroll down to select a preset.
2. Press ENTER to access the menu for selected preset.

### List Submenu

Use the list submenu to set, modify, or delete presets.

1. Access the preset list:

**UTILITIES > MICPRESET > LIST**

2. Scroll down to select a preset.
3. ENTER to access the menu for the selected preset.

**SET:** Activates the selected preset.

**MODIFY:** Modify the selected preset.

**DELETE:** Deletes the selected preset.

## Modify Presets

To change or modify the presets, you must enter the microphone preset submenu: **UTILITIES > MICPRESET > LIST** and select a preset. From the sub-menu you can set, modify, or delete the setting.

Use the joystick to edit values:

**ENTER:** move to the next value.

**UP/DOWN:** edit the selected value.

**EXIT:** exit the preset.

**To exit and save:** Continue to scroll right, through all fields, until **PRESETSAVED** appears.

**To edit the eight-character name:**

1. Highlight the preset name and press the joystick down.
2. Scroll up/down to change the character.
3. Scroll right to move to the next character.
4. To exit, continue to scroll right past the last character.

### Copy and Paste Preset List

Use **COPY/PASTE** to transfer the mic preset list from one plug-on transmitter to another. This function can be used between different transmitter frequency bands.

1. Highlight **COPY/PASTE** from the mic preset menu on both transmitters. (**UTILITIES > MICPRESET**)

**Important:** **COPY/PASTE** must be highlighted on both transmitters.

2. Align the transmitter **IR** windows and press ENTER on the source transmitter (the transmitter you want to copy from).
3. The display shows **SUCCESS** on both transmitters after transferring the list.

# Specifications

<b>Modulation</b>	FM (45 kHz max. deviation)	
<b>Frequency Range</b>	470–952 MHz*	
<b>Tuning Bandwidth</b>	up to 80 kHz*	
<b>Antenna Type</b>	Dipole Note: UR3 and attached microphone act as the antenna	
<b>Carrier Frequencies</b>	up to 3200, tunable increments: 25 kHz*	
<b>RF Output Power</b>	Selectable: 10 mW, 50 mW max.*	
<b>Power Requirements</b>	2AA batteries, alkaline	
<b>Battery Life</b> typical, alkaline	without phantom power, 10 mW: with phantom power, 50 mW:	10 hours 3 range 4 hours
	frequency band dependent	
<b>Sensitivity Settings</b>	mic, line	
<b>Gain Adjustment Range</b>	–10 to +20 dB	
<b>Tonekey</b>	32 kHz	
<b>Frequency Stability</b>	±0.0015%	
<b>Spurious Radiation</b> below carrier, typical	75 dB	
<b>Equivalent Input Noise</b>	–127.0 dBV A-Weighted (audio front end)	
<b>Maximum Audio Input Level</b> at 0 dB gain setting	LINE setting: MIC setting:	+24 dBV –21 dBV

<b>Differential Input Impedance</b>	LINE setting: 6 kΩ MIC setting: 3 kΩ
<b>Frequency Response</b> +1.5 dB, –3 dB, through a UR4 receiver	35 Hz–17 kHz Overall system frequency response depends on microphone element and receiver.
<b>High Pass Filter</b>	Two-pole (12 dB per octave), cut off frequency selectable from 40 to 240 Hz
<b>THD+N</b> 1 kHz sine wave at 6 dB below clip, through a UR4 receiver	<0.3%
<b>System Dynamic Range</b> A-weighted, typical	through a UR4 receiver: LINE setting: 107 dB MIC setting: 105 dB through a UR5 receiver: LINE setting: 102 dB MIC setting: 100 dB
<b>Audio Input</b>	Female XLR Connector, 1=ground, 2=hot, 3=cold
<b>Phantom Power</b>	+48 V (±4 V), +12 V (±1 V): 7 mA max.
<b>Weight</b>	196 g (6.9 oz.), with batteries
<b>Dimensions</b>	99 mm x 66 mm x 23 mm (3.9 in. x 2.6 in. x 0.9 in.) H x W x D

\*varies by region



## UR3 Frequency Bands - ABU/EMEA

Frequency Band Name	Range	Freq. Span (MHz)*
G1	470-530	60
G1E	470-530	60
H4	518-578	60
H4E	518-578	60
J5	578-638	60
J5E	578-638	60
J5HK	578-638	60
K4E	606-666	60
L3	638-698	60
L3E	638-698	60
M5E	694-758	64
P8	710-790	80
Q5	740-814	74
R9	790-865	75
R16	794-806	12
X1	944-952	8
* conductive into 50 ohms		

## UR3 Frequency Bands - SAL

Frequency Band Name	Range	Freq. Span (MHz)
H4	518-578	60
H4HK	518-565	47
J5E	578-638	60
L3E	638-698	60
P9	710-787	77
R9	810-865	55
R16	794-806	12
R18	794-806	12

### NOTE:

This Radio equipment is intended for use in musical professional entertainment and similar applications. This Radio apparatus may be capable of operating on some frequencies not authorized in your region. Please contact your national authority to obtain information on authorized frequencies and RF power levels for wireless microphone products.

## Certifications

---

Meets requirements of the following standards: EN 300 422 Parts 1 and 2, EN 301 489 Parts 1 and 9, EN60065.

Certified under FCC Part 74.

Certified by IC in Canada under RSS-123 and RSS-102.

This device complies with Industry Canada licence-exempt RSS standard(s). Operation of this device is subject to the following two conditions: (1) this device may not cause interference, and (2) this device must accept any interference, including interference that may cause undesired operation of the device.

Le présent appareil est conforme aux CNR d'Industrie Canada applicables aux appareils radio exempts de licence. L'exploitation est autorisée aux deux conditions suivantes : (1) l'appareil ne doit pas produire de brouillage, et (2) l'utilisateur de l'appareil doit accepter tout brouillage radioélectrique subi, même si le brouillage est susceptible d'en compromettre le fonctionnement.

The CE Declaration of Conformity can be obtained from Shure Incorporated or any of its European representatives. For contact information please visit [www.shure.com](http://www.shure.com)

The CE Declaration of Conformity can be obtained from: [www.shure.com/europe/compliance](http://www.shure.com/europe/compliance)

Authorized European representative:

Shure Europe GmbH

Headquarters Europe, Middle East & Africa

Department: EMEA Approval

Jakob-Dieffenbacher-Str. 12

75031 Eppingen, Germany

Phone: 49-7262-92 49 0

Fax: 49-7262-92 49 11 4

Email: [info@shure.de](mailto:info@shure.de)

**Note:** EMC conformance testing is based on the use of supplied and recommended cable types. The use of other cable types may degrade EMC performance.

**Changes or modifications not expressly approved by the manufacturer could void the user's authority to operate the equipment.**



**WARNING:** Danger of explosion if battery incorrectly replaced. Operate only with Shure compatible batteries.



**WARNING:** Battery packs shall not be exposed to excessive heat such as sunshine, fire, or the like.

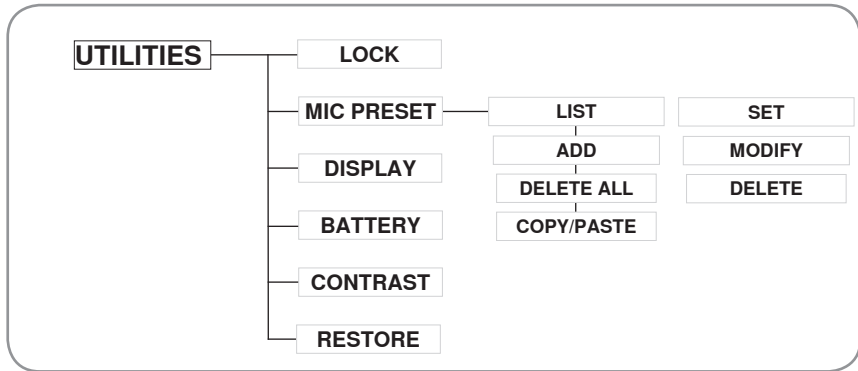
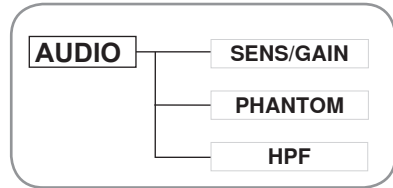
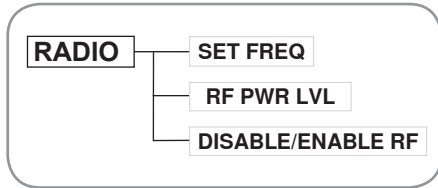
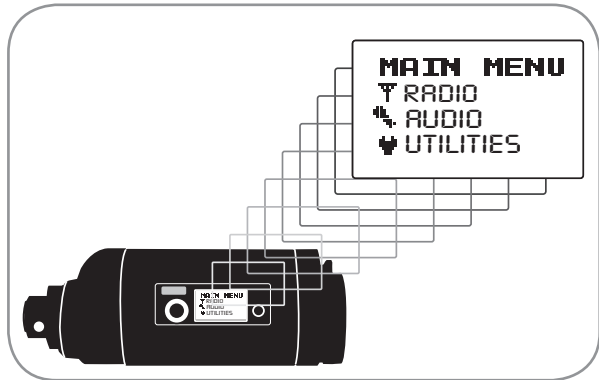
## LICENSING INFORMATION

Licensing: A ministerial license to operate this equipment may be required in certain areas. Consult your national authority for possible requirements. Changes or modifications not expressly approved by Shure Incorporated could void your authority to operate the equipment. Licensing of Shure wireless microphone equipment is the user's responsibility, and licensability depends on the user's classification and application, and on the selected frequency. Shure strongly urges the user to contact the appropriate telecommunications authority concerning proper licensing, and before choosing and ordering frequencies.

## Information to the user

This equipment has been tested and found to comply with the limits for a Class B digital device, pursuant to Part 15 of the FCC Rules. These limits are designed to provide reasonable protection against harmful interference in a residential installation. This equipment generates uses and can radiate radio frequency energy and, if not installed and used in accordance with the instructions, may cause harmful interference to radio communications. However, there is no guarantee that interference will not occur in a particular installation. If this equipment does cause harmful interference to radio or television reception, which can be determined by turning the equipment off and on, the user is encouraged to try to correct the interference by one or more of the following measures:

- Reorient or relocate the receiving antenna.
- Increase the separation between the equipment and the receiver.
- Connect the equipment to an outlet on a circuit different from that to which the receiver is connected.
- Consult the dealer or an experienced radio/TV technician for help.



---

**SHURE**<sup>®</sup>

SHURE Incorporated <http://www.shure.com>

United States, Canada, Latin America, Caribbean:

5800 W. Touhy Avenue, Niles, IL 60714-4608, U.S.A.

Phone: 847-600-2000 U.S. Fax: 847-600-1212 Int'l Fax: 847-600-6446

Europe, Middle East, Africa:

Shure Europe GmbH, Phone: 49-7262-9249-0 Fax: 49-7262-924911-4

Asia, Pacific:

Shure Asia Limited, Phone: 852-2893-4290 Fax: 852-2893-4055