

# ***i-PIX***

# satellite

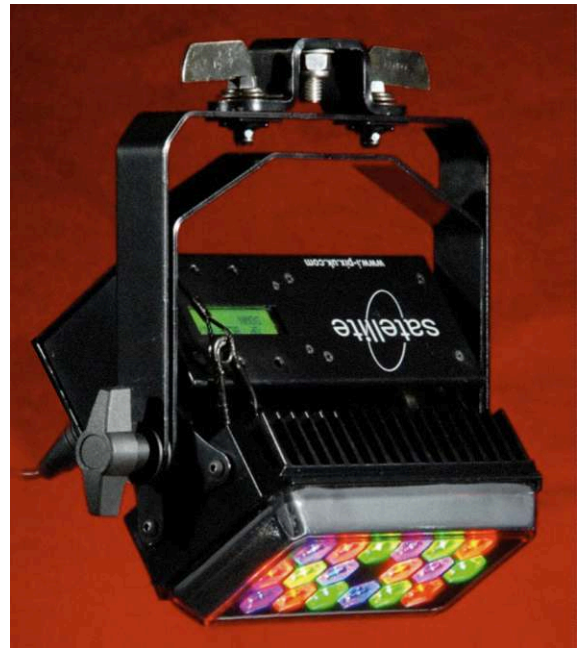
The **satellite** led fixture is a 42 Watt RGB self-contained LED wash fixture with power and data daisy-chaining ability, and the potential of running up to 50 fixtures off a single 16 Amp feed.

Users can also utilise the onboard software to create their own internal chase sequences when used in stand alone mode. With up to 20 user defined memories also.

the satellite is a very versatile, 'hirable', engineer friendly led fixture. Robust and small in nature, yet packs a punch in terms of power and intensity. Ideal as a truss toner, shin kickers or as part of a set wash, the range of possible uses from this small versatile fixture makes for a useful tool as part of a hire inventory or lighting designers tool.

The Satellite has two camloc fittings allowing for tool free rigging. i-pix's omega bracket for tv spigot and clamps, making for a quick rig floor or rigged fixture. Optical accessories included include a 10 degree and a 30 degree lens cap as standard. Other beam sizes are available upon request.

A strong, tourable mechanical design provides for a durable 'workhorse' colour changing fixture exceptionally easy to setup and run as part of a rig or on its own.



## features

- Ultra smooth dimmer response
- Flicker free operation for all types of film and television use
- virtually zero heat emission
- Easy-to-read LCD user interface and easy address and set up
- Energy efficient additive colour mixing and static colour device
- Luxeon high power K2 leds from Philips lumileds
- Efficient heat dissipation of both led heat and control section
- Self contained device
- Built in user interface for additional functionality
- Built in functions for dmx use and stand alone use
- Switchable enhanced dimmer curve for finer control of lower intensities
- A variety of different operating modes are provided for differing applications
- Super fast strobe from constant on to a slow pulse, colour oscillations are possible
- Six degree beam angle as standard
- Accessory beam shaper provides three alternative refracted beam sizes
- Easy connect of data with 5pin xlr's
- Easy power input and output for daisy chaining adjacent units 16amps max
- Option of combined data and power cable for tidy setups
- Up to 25 units fed from one 16 amp feed at 110 volts
- Stand alone function provides memory storage
- A stand alone chase sequence of using specified memories
- Outputs 5 channels of dmx to other fixtures
- Auto ranging power input 100v to 240 volts, ideal for touring globally
- Dual safety points provided as standard

[www.i-pix.com](http://www.i-pix.com)

+44 (0)161 443 4140

# i-PIX

## satellite

### Tech spec

#### Dimensions

Length	8.8" (218 mm)
Height	8.5" (211 mm) without omega bracket
Width	4" (100 mm)
Weight	7.7 lbs. (3.5Kg)

#### Mechanical design/ materials used

Rugged aluminium and polycarbonate cap design.  
inner and outer yoke, folded and welded steel  
Finish Electro static powder coated black satin

#### Rigging

Outer yoke is fitted with 2 x 1/4 turn camloc fasteners and a 1/2 inch (12 mm) hole  
Fixture comes equipped with accessory holder grooves to easily clip on a lens cap to the front.

#### Electrical connections for mains and data in/out

Input Voltage	90-264 VAC
Input Frequency	47-63 Hz
Input Current constant	0.4 A max at 230 VAC
Inrush Current	40 A max at 230 VAC
Earth Leakage Current	< 100 µA at 115 VAC < 200 µA at 230 VAC
Input Protection	1A anti sure fuse, 5x20mm
Mains input socket	Neutrik NAC3MPA chassis socket type A
Mains output socket	Neutrik NAC3MPB chassis socket type B
DMX input socket	Neutrik NC5MDL1 XLR 5 pole chassis socket
DMX output socket	Neutrik NC5FDL1 XLR 5 pole chassis socket
Mains in/out sockets current	16 A max at 240 VAC

#### Data type

USITT DMX512-A

Note; units comes complete with 16 amp plug and 5 pin male. A 1 meter combined power cable link is also supplied.

#### Control

RGB additive color mixing

#### DMX channels

3 channel or 5 channel operating modes.

#### Modes 8 bit standard resolution:

- 3 channels (red, green and blue)
- 5 channels (master intensity, strobe, red, green and blue)

#### Light emitting diodes;

Red LED's	6 x Philips LUXEON® I Emitters
Blue LED's	6 x Philips LUXEON® III Emitters
Green LED's	6 x Philips LUXEON® III Emitters

Wavelengths	Red 625 Nm +/- 5.5 Nm Green 517 Nm +/- 5.5 Nm Blue 452.5 Nm +/- 5.5 Nm
Optics	18 6 degree optics.

#### Thermal characteristics

Fixture passive convection cooled

#### Operating temperature

Minimum: -20 degrees C  
Maximum: +46 degrees C

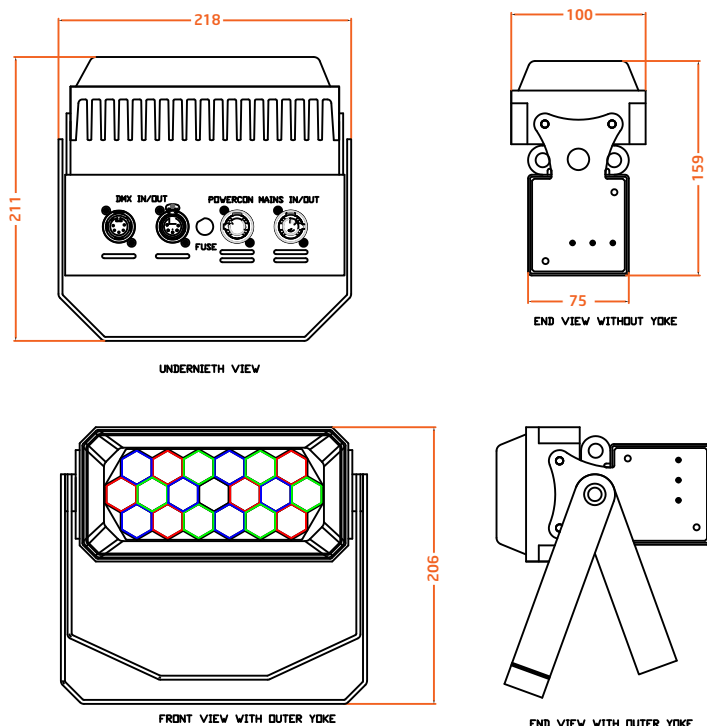
#### Weather protection

IP20, cannot be used outdoors without protection.

#### Approvals & Compliance

- BS EN 55103-1 Harmonics
- BS EN 55103-2 Immunity
- BS EN 61000-3-2 Emissions
- USA / Canada ETL pending

lead and mercury free construction



i-PIX reserves the right to change product specifications

[www.i-pix.com](http://www.i-pix.com)  
+44 (0)161 443 4140